

SCWCA eNEWS

Southern California Women's Caucus for Art

February
2018

Friends,

A special thanks to **President Shelley Heffler** for her invitation to write the February column.

As members of the leading national organization for women in the visual arts, we have an incredible opportunity to join in workshops, awards, receptions, panels with artists, curators and other professionals from across the country from February 22 to 24, 2018.

The best way to participate is to [register now for the WCA conference](#) (just a \$50 fee). Conference meetups, workshops, exhibition events, a conference tote and schedule are all included in the registration fee. You can then add tickets for the bus tour, awards dinner or performance. If you want to attend all the ticketed events, then definitely go for the full Conference Package.

WCA intentionally makes educational events free and open to the public. These include the Friday **Reception & Film Screening of "Gloria's Call"** at the Convention Center, our exhibition receptions of **Art Speaks!** at Arena 1 Gallery (on Thursday, 2/22/18) and **Reality Sandwiches** at ArtShare LA (on Friday, 2/23/18) and, most important, the Lifetime Achievement Awards Ceremony on Saturday.

I cannot think of a better way to experience what it means to be a member of a national activist community of women in the arts than to register and participate as you can - for a morning, day or the whole shebang. And, it's always more fun with a friend - so reach out now to a pal or come and make new art friends.

Best,
[Sandra Mueller](#)



P.S. We need several "**Fearless Art Rangers**" (solo or in teams) to lead Downtown Art Crawls for our visitors on Friday afternoon during the Conference. Destinations are your choice.

Also need silent auction items of interest to artists for the Awards Dinner. Email WCA President Elect [Margo Hobbs](#) if interested.

[MORE AT NATIONALWCA.ORG](http://MOREATNATIONALWCA.ORG)

STAND WITH WCA @ THE LIFETIME ACHIEVEMENT AWARDS!



Lee Bontecou
Lynn Hershman
Leeson
Gloria Orenstein
Renée Stout
Amelia Jones
and Kathy Gallegos
President's Awards for Art
and Activism

Women's Caucus for Art 2018
Lifetime Achievement Awards

Sat, Feb 24, 2018, Los Angeles
Free Awards Ceremony 6-7:30pm
Celebration Dinner 7:30-10pm
Dinner tickets and info:
www.nationalwca.org

Renée Stout Soul Catcher/Regenerator, 2014-2015

WCA Women's caucus ART

[Lifetime Achievement Award Ceremony and Dinner Tickets are included](#) in all Conference Packages. They can also be purchased individually or in discounted packets of 5 or 10 tickets.

Don't forget to renew your SCWCA membership.

To pay by credit card go to [National WCA](#). Be sure to select "CAS" as your chapter from the tab called "Member-at Large." You can also update your contact info or join a national caucus of special interest. To pay by check, contact SCWCA Treasurer [Karen Schiffman](#). Fees cover both

your national and chapter memberships for the calendar year.

SOCIAL MEDIA INVOLVES EVERYONE!

Share your passions for SCWCA and Women in the Visual Arts on your Facebook, Twitter and Instagram accounts.

SUPPORT WCA TODAY!

You can support WCA by shopping [AmazonSmile](#) or make a donation online at [nationalwca.org](#).

JOIN US ON FACEBOOK!

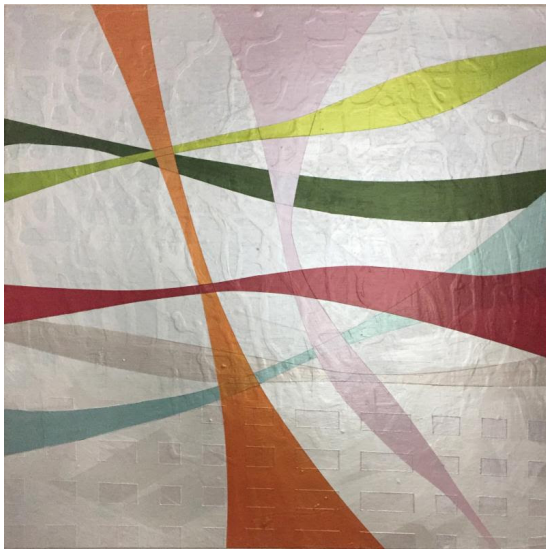
Please visit us at: <https://www.facebook.com/groups/124466755570/>

SCWCA MEMBER NEWS

To submit a member announcement, email enews@scwca.org by the 20th of the month and include the url for the venue. JPEGs are published on a space available basis.

ART SPEAKS! LEND YOUR VOICE Artist Reception, Thurs. 2/22/18, 5-8 pm

Arena 1 Gallery at Santa Monica Art Studios, 5-8 pm



Congratulations to SCWCA members whose works were selected by curator **Jill Moniz** for the *Art Speaks! Lend Your Voice* exhibition at Arena One Gallery: Sharon Barnes (image right), Yvonne Beatty, Janine Brown, Lorraine Bubar, Megan Francis, Ellen Freyer, Dwora Fried, Betty Green, Shelley Heffler, Veda B Kaya, Linda Kunik, Lynda Levy, J. J. L'Heureux, Charity Malin, Sandra Mueller, Melissa Reischman, Julia Rigby, Karrie Ross (image left), Linda Jo Russell, Seda Saar, Doni Silver Simons and Linda Vallejo. Runs 2/22/18 thru 3/10/18. Opening Reception on Thursday, 2/22/18 from 5 to 8 pm.

Be sure to RSVP for the reception to [Karen Schifman](#) by 2/16/18.

Dwora Fried's work will be featured in the upcoming exhibition, *Visual Resistance* at [Fullerton College Art Gallery](#). Runs 2/1/18 thru 2/21/18. Opening Reception on Thursday, 2/1/18 from 5 to 7 pm.



Katherine Kean is a featured artist in *Four Million Angels* presented by the [Annenberg Community Beach House](#) in Santa Monica, CA (image left). Runs thru 4/30/18.

The Ocean of Memories exhibition at the Taiwan Academy features four artists including members **Danielle Eubank** and **Cindy Shih** runs thru 2/16/18.

Linda Kunik has a solo exhibition, *A Fragile Strength*, at [Gallery 825](#). Opening reception on Saturday, 2/10/18 from 6 to 9 pm. Runs 2/10/18 thru 3/9/18.

Selections from **Mariona Barkus'** *Illustrated History* (1981 to 2018) and her accordion folded book, *Love*, will be in "ReOpening the Book" at the [Elverhøj Museum of History & Art](#) in Solvang. Runs 2/2/18 thru 4/29/18.

Karen Schifman's collages are included in the Collage Artists of America exhibit, *A Little Bit of Madness* at the [Topanga Canyon Gallery](#) (image right). Opening reception on Saturday, 2/3/18 from 3 to 6 pm. Runs 2/3/18 thru 2/18/18.



SCWCA ARTIST REGISTRY - KRISTINE SCHOMAKER



[Kristine Schomaker's](#) paintings (image left) are founded upon an ongoing investigation into transforming the modern abstract expressionist mark into the postmodern vocabulary. In some of her current paintings, she uses the pour and drip as a trope by changing them into a language influenced by graphic design, pop art, virtual reality and animation. Her intention is to incorporate the random and arbitrary through controlled accident. Often taking her palette directly from pre-determined sources such as Dr. Seuss books, psychedelic posters, the computer and cyberspace, she blurs the line between the physical and the virtual.

The Artist Registry is a free benefit for SCWCA members. If you wish to create or update a page please email [Ann Isolde](#). You must be a current member of the chapter for your page to be included online.

ARTIST CALLS

[Momentum Directory](#). The Institute for Women and Art. Ongoing.

[College Art Association](#). Calls and Opportunities. Ongoing.

[California Arts Council](#). Artist Calls. Ongoing.

[GYST](#). Artist Opportunities. Ongoing.

[Lunch Ticket](#) (journal) calls for visual art and written submissions. Ongoing.

WOMEN AROUND TOWN

by Karen Schifman

I am pleased to say that there are lot a of women artists whose work are in the museums and galleries this month. I do hope to see you at the opening of *Art Speaks! Lend Your Voice* at Arena 1 Gallery on Thursday, 2/22/18 from 5 to 8 pm.

IN THE GALLERIES:



I am quite excited about the upcoming exhibition at [Hauser and Wirth](#) of previously unseen works on paper by **Louise Bourgeois** (1991-2010). The works in the exhibition, entitled *The Red Sky* (image left), were created between 2007 and 2009. They provide a glimpse into one part of her oeuvre and reinforce how essential writing, drawing and printmaking were in this amazing sculptor's artistic practice. I will very likely be at Hauser/Wirth on Friday, 2/23/18 at around 2:30 pm to view and discuss Louise Bourgeois if you would like to join me.

Also at Hauser and Wirth is **Geta Brătescu: The Leaps of Aesop**. This is the first Los Angeles solo presentation devoted to the 91 year-old forerunner in the field of Romanian Conceptualism (image right). Her diverse oeuvre - comprising drawing, collage, engraving, textiles, and photography, as well as experimental film, video and performance

mines themes of identity, gender and dematerialization, often drawing from the stories of literary figures and addressing the symbiotic relationship between art making and working environments environments. Aesop, the ancient Greek fabulist, serves as a point of departure for this exhibition, which features more than fifty works that span Brătescu's career. In many ways a fitting avatar for Brătescu, Aesop manifests in the works on view as a symbol of antic irreverence, mocking authority and status. A spirited believer in the role of the artist as that of a disruptor, Brătescu has championed ideas of play and disorder throughout her vibrant practice, remarking, 'there is much economy and at the same time rebellion in the creation of expression' (from the gallery website).



[Regen Projects](#) presents **Catherine Opie's** first film, *The Modernist*. The film is 22 minutes in length and is composed of over 800 black and white still images. Runs thru 2/18/18.



[Anat Ebgi](#) Gallery is pleased to announce *Sunset*, the first solo exhibition of **Caroline Walker** in Los Angeles (image left). The exhibition focuses on the figure of a woman within the psychological spaces of a modernist Hollywood Hills home. Large scale paintings as well as works on paper are featured. Runs thru 3/3/18.

Lisa Seebach's *Soft Architecture* is the current exhibition at at Meliksetian/Briggs Gallery (image right). This Berlin-based artist has made a site-specific installation consisting of five individual sculptures, three wall-works and two floor pieces, comprised of steel and ceramic components. Seebach's sculptures are made in relation to the human form and its dynamics of how the body interacts with the sculptural form. Each sculpture conjures an amplified moment both elegant and fragile, evoking a space containing something of a thought. "The title of the exhibition, *Soft Architecture*, relates to the artist's conception of a psychological structure governing the installation: her memories of architectural settings and architectonic forms in the built environment of the city and living spaces combined with heightened psychic tension and mental consciousness, emotions and sensations." Runs thru 2/24/18.



[Hive Gallery](#) on Spring St. presents *Stitch Fetish 6* curated by **Ellen Schinderman** featuring works by **Meghan Willis** and **Rebecca Levy**. Runs 2/2/18 thru 2/25/18. Opening reception on Saturday, 2/3/18 from 8 to 11 pm.

[The Box Gallery](#) in the Arts District presents *Time Smear*, an exhibition of work by **Simone Forti**. Forti, an American Italian artist, began her career as a dancer. She is known for her performances and post-modern works. Runs thru 3/24/18.



[Art +Practice](#) presents **Maren Hassinger: The Spirit of Things** surveying the extensive career of the multi-talented artist (image left). This exhibition presents sculpture, performance documentation and videos that explore the emotional dynamics of relationships among different communities of people and between them and the environments in which they live. Runs 2/24/18 thru 5/26/18. Opening reception on Saturday, 2/24/18 from 2 to 5pm.

Now I'm going to tell you everything is the inaugural project for [ICA LA](#)'s courtyard wall on 7th Street, a large-scale temporary work by Los Angeles-based artist **Sarah Cain** (image right).

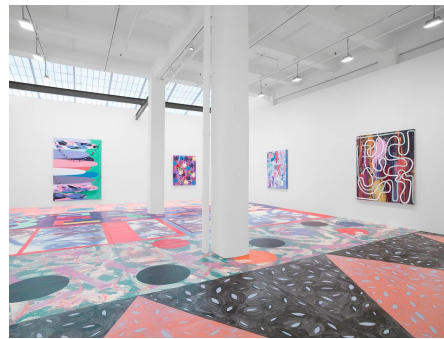
Spanning 800 square feet, this new work takes its title from a poem written for the artist by celebrated poet **Bernadette Mayer**. Cain's abstract paintings often flirt with installation, unfolding across walls and floors,

uncontained by the frame of the canvas. Recent work incorporates furniture, textiles, jewelry and found objects as a way to break up the experience of painting as a two-dimensional form. Her vivid, playful patchwork of lines and shapes resist simple definition, recalling styles as diverse as abstract expressionism, graffiti, Pop and Feminist craft.

IN THE MUSEUMS:



[Lancaster MOAH](#) presents three outstanding exhibitions opening this month. *Memory and Identity: The Marvelous Art of **Betye, Lezley, and Alison Saar*** (image left) curated by **Betty Ann Brown** and *It Takes a Village*, a group exhibition of works by **Betye Saar, Lezley Saar, Alison Saar, Wyatt Kenneth Coleman, Richard S. Chow, List Bartleson and Jane Szabo**. Additionally, at MOAH Cedar is *Continuum: **Monica Wyatt***, her first installation in collaboration with curator, **Jill Moniz**. Runs 2/10/18 thru 4/22/18. Opening reception on Saturday, 2/10/18 from 4 to 6 pm.



[Pomona College Museum of Art](#) presents *Muse: **Mickalene Thomas** Photographs tête-a-tête* (image right). While working across multiple series, much of her photographic work functions as a personal act of staging and reappropriation both of images she has created herself and images she has singled out as influence. Thomas's portraits draw equally from 1970s black-is-beautiful images of women such as supermodel Beverly Johnson and actress Vonetta McGee; Édouard Manet's odalisque figures; and the mise-en-scène studio portraiture of James Van Der Zee and Malick Sidibé, to mention a few. This exhibition and accompanying publication are the first to gather together her various approaches to photography, including C-prints, collages and Polaroids. The exhibition at Pomona College also includes an installation that represents the artist's studio, a tableau depicted in the photographs. Runs thru 5/13/18.



[USC Fisher Museum of Art](#) presents ***Senga Nengudi: Improvisational Gestures***. Nengudi is known for her amazing conceptual and performance work (image left). This is an extensive exhibition representing decades of her interdisciplinary practice. She often draws from collaboration with other artists and disciplines, including dancers and musicians. Blending natural and synthetic materials, including pantyhose, rubber and sand, her sculptures often await the activation of a human body, marking and mystifying the dynamic intimacy between us and the matter that we move through. Runs thru 4/14/18.



Opening later this month at [The Main Museum](#) is **Dora De Larios: Other World** (image left). The exhibition highlights the late artist's ceramic works. In her six decade-long career, De Larios' work has long been undervalued. She operated outside of the gallery system by necessity, carving space for her and her work by starting Irving Place Studio, an independent studio practice, and through large-scale commissions in California, Hawaii, Tahiti, and Japan. Her identity as a Mexican-American woman in a male-dominated art world is deeply reflected in her concentration on and focus on the feminine form in her works. Runs 2/25/18 thru 5/13/18.

[Frederick Weisman Museum of Art](#) at Pepperdine University presents **Alexis Smith: Private Lives and Public Affairs**. For over 40 years, Smith's art has explored the depths of popular culture. She begins with an array of images ranging from thrift-store finds to nostalgic advertisements and juxtaposes them with poetic and poignant texts. Her art underscores how the media shapes our self-image and reminds us that meaning is often transitory and always surprising. Runs thru 4/1/18.

[The Pasadena Museum of California Art](#)'s upcoming exhibition is *The Feminine Sublime*. The exhibition will feature paintings that provide a feminist perspective about the concept of the sublime. Exhibition artists and Los Angeles-based painters **Merion Estes, Yvette Gellis, Virginia Katz, Constance Mallinson** and **Marie Thibeault** counter traditional landscape painters and enlist challenging aesthetics, formal inventiveness and provocative imagery to re-imagine relationships with rapidly changing urban and natural environments in more relevant and meaningful ways. Runs thru 6/3/18.



Ana Serrano: Homegrown will also be presented later this month at PCMA (image left). Serrano's immersive "garden" both references a recognizable urban landscape and pays homage to the artist's family connection to the land in Mexico. Highlighting the juxtaposition of the built environment and plant life, the installation is composed of bright-colored walls and lively plants made of cardboard and paper. Runs thru 6/3/18.

The two outstanding exhibitions at the [California African American Museum](#) are *We Wanted a Revolution: Black Radical Women, 1965-85* and **Lezley Saar: Salon de ReRefusés** (image right). Runs thru 2/18/18.

Unspeakable: Atlas, Kruger, Walker at the UCLA Hammer Museum is a selection of video installations from the Hammer Contemporary Collection organized by chief curator **Connie Butler**, chief curator **Annie Butler** and director **Ann Philbin**.



The exhibition features major works by American artists Charles Atlas, **Barbara Kruger** and **Kara Walker** (image left) created in the last decade. Among these is Kruger's *The Globe Shrinks*, a four-channel, 13-minute compilation of video and text that narrates in a series of scenes and skits the conflicting coexistence of kindness and brutality. I was transported in a five-channel installation by Walker that touches on the Civil War, the slave Sally Hemings, the artist's studio and the genocide in Darfur. In this work, Walker's signature silhouettes playing out haunting



emotional vignettes are flat hand puppets set against vividly colored backgrounds and accompanied by a soundtrack of country music. Runs thru 5/13/18.

Don't miss this wonderful Getty PST LA/LA exhibition titled *Another Promised Land: Anita Brenner's Mexico* continuing at the [Skirball Cultural Center](#). It offers a new perspective on the art and visual culture of Mexico and its relationship to the United States as seen through the life and work of the Mexican-born, Jewish-American writer **Anita Brenner** (1905-1974). Runs thru 2/25/18.

email: enews@scwca.org
web: <http://www.scwca.org>

Southern California Womens Caucus for Art, [5161 Inglewood Bl](#), Culver City , CA [90230](#)

SafeUnsubscribe™ karen.j.schifman@csun.edu

[Update Profile](#) | [About our service provider](#)

Sent by enews@scwca.org in collaboration with



Cheryl Bookout <cherylbookout@gmail.com>
To: "Schifman, Karen J" <karen.j.schifman@csun.edu>

Sat, Feb 3, 2018 at 10:20 PM

Thank you!

On Sat, Feb 3, 2018 at 9:13 PM Schifman, Karen J <karen.j.schifman@csun.edu> wrote:

Professor Karen Schifman
Professor of Art History
Art Departments
California State University Northridge

From: SCWCA eNEWS <enews@scwca.org>
Sent: Thursday, February 1, 2018 6:35 AM
To: Schifman, Karen J
Subject: SCWCA February eNews

SCWCA eNEWS
Southern California Women's Caucus for Art

February
2018

Friends,

A special thanks to **President Shelley Heffler** for her invitation to write the February column.

As members of the leading national organization for women in the visual arts, we have an incredible opportunity to join in workshops, awards, receptions, panels with artists, curators and other professionals from across the country from February 22 to 24, 2018.

The best way to participate is to [register now for the WCA conference](#) (just a \$50 fee). Conference meetups, workshops, exhibition events, a conference tote and schedule are all included in the registration fee. You can then add tickets for the bus tour, awards dinner or performance. If you want to attend all the ticketed events, then definitely go for the full Conference Package.

WCA intentionally makes educational events free and open to the public. These include the Friday **Reception & Film Screening of "Gloria's Call"** at the Convention Center, our exhibition receptions of **Art Speaks!** at Arena 1 Gallery (on Thursday, 2/22/18) and **Reality Sandwiches** at ArtShare LA (on Friday, 2/23/18) and, most important, the Lifetime Achievement Awards Ceremony on Saturday.

I cannot think of a better way to experience what it means to be a member of a national activist community of women in the arts than to register and participate as you can - for a morning, day or the whole shebang. And, it's always more fun with a friend - so reach out now to a pal or come and make new art friends.

Best,

[Sandra Mueller](#)



P.S. We need several "**Fearless Art Rangers**" (solo or in teams) to lead Downtown Art Crawls for our visitors on Friday afternoon during the Conference. Destinations are your choice.

Also need silent auction items of interest to artists for the Awards Dinner. Email WCA President Elect [Margo Hobbs](#) if interested.

[MORE AT NATIONALWCA.ORG](http://NATIONALWCA.ORG)

STAND WITH WCA @ THE LIFETIME ACHIEVEMENT AWARDS!



Lee Bontecou
Lynn Hershman
Leeson
Gloria Orenstein
Renée Stout
Amelia Jones
and Kathy Gallegos
President's Awards for Art
and Activism

Women's Caucus for Art 2018
Lifetime Achievement Awards

Sat, Feb 24, 2018, Los Angeles
Free Awards Ceremony 6-7:30pm
Celebration Dinner 7:30-10pm
Dinner tickets and info:
www.nationalwca.org

Renée Stout *Soul Catcher/Regenerator*, 2014-2015



[Lifetime Achievement Award Ceremony and Dinner Tickets are included](#) in all Conference Packages. They can also be purchased individually or in discounted packets of 5 or 10 tickets.

Don't forget to renew your SCWCA membership.

To pay by credit card go to [National WCA](#). Be sure to select "CAS" as your chapter from the tab called "Member-at Large." You can also update your contact info or join a national caucus of special interest. To pay by check, contact SCWCA Treasurer [Karen Schiffman](#). Fees cover both your national and chapter memberships for the calendar year.

SOCIAL MEDIA INVOLVES EVERYONE!

Share your passions for SCWCA and Women in the Visual Arts on your Facebook, Twitter and Instagram accounts.

SUPPORT WCA TODAY!

You can support WCA by shopping [AmazonSmile](#) or make a donation online at [nationalwca.org](#).

JOIN US ON FACEBOOK!

Please visit us at: <https://www.facebook.com/groups/124466755570/>

SCWCA MEMBER NEWS

To submit a member announcement, email enews@scwca.org by the 20th of the month and include the url for the venue. JPEGs are published on a space available basis.

ART SPEAKS! LEND YOUR VOICE Artist Reception, Thurs. 2/22/18, 5-8 pm

Arena 1 Gallery at Santa Monica Art Studios, 5-8 pm



Congratulations to SCWCA members whose works were selected by curator **Jill Moniz** for the *Art Speaks! Lend Your Voice* exhibition at Arena One Gallery: Sharon Barnes (image right), Yvonne Beatty, Janine Brown, Lorraine Bubar, Megan Francis, Ellen Freyer, Dwora Fried, Betty Green, Shelley Heffler, Veda B Kaya, Linda Kunik, Lynda Levy, J. J. L'Heureux, Charity Malin, Sandra Mueller, Melissa Reischman, Julia Rigby, Karrie Ross (image left), Linda Jo Russell, Seda Saar, Doni Silver Simons and Linda Vallejo. Runs 2/22/18 thru 3/10/18. Opening Reception on Thursday, 2/22/18 from 5 to 8 pm.

Be sure to RSVP for the reception to [Karen Schifman](#) by 2/16/18.

Dwora Fried's work will be featured in the upcoming exhibition, *Visual Resistance* at [Fullerton College Art Gallery](#). Runs 2/1/18 thru 2/21/18. Opening Reception on Thursday, 2/1/18 from 5 to 7 pm.



Katherine Kean is a featured artist in *Four Million Angels* presented by the [Annenberg Community Beach House](#) in Santa Monica, CA (image left). Runs thru 4/30/18.

The Ocean of Memories exhibition at the Taiwan Academy features four artists including members **Danielle Eubank** and **Cindy Shih** runs thru 2/16/18.

Linda Kunik has a solo exhibition, *A Fragile Strength*, at [Gallery 825](#). Opening reception on Saturday, 2/10/18 from 6 to 9 pm. Runs 2/10/18 thru 3/9/18.

Selections from **Mariona Barkus' Illustrated History** (1981 to 2018) and her accordion folded book, *Love*, will be in "ReOpening the Book" at the [Elverhøj Museum of History & Art](#) in Solvang. Runs 2/2/18 thru 4/29/18.

Karen Schiffman's collages are included in the Collage Artists of America exhibit, *A Little Bit of Madness* at the [Topanga Canyon Gallery](#) (image right). Opening reception on Saturday, 2/3/18 from 3 to 6 pm. Runs 2/3/18 thru 2/18/18.



SCWCA ARTIST REGISTRY - KRISTINE SCHOMAKER



[Kristine Schomaker's](#) paintings (image left) are founded upon an ongoing investigation into transforming the modern abstract expressionist mark into the postmodern vocabulary. In some of her current paintings, she uses the pour and drip as a trope by changing them into a language influenced by graphic design, pop art, virtual reality and animation. Her intention is to incorporate the random and arbitrary through controlled accident. Often taking her palette directly from pre-determined sources such as Dr. Seuss books, psychedelic posters, the computer and cyberspace, she blurs the line between the physical and the virtual.

The Artist Registry is a free benefit for SCWCA members. If you wish to create or update a page please email [Ann Isolde](#). You must be a current member of the chapter for your page to be included online.

ARTIST CALLS

[Momentum Directory](#). The Institute for Women and Art. Ongoing.

[College Art Association](#). Calls and Opportunities. Ongoing.

[California Arts Council](#). Artist Calls. Ongoing.

[GYST](#). Artist Opportunities. Ongoing.

[Lunch Ticket](#) (journal) calls for visual art and written submissions. Ongoing.

WOMEN AROUND TOWN

by Karen Schiffman

I am pleased to say that there are lot a of women artists whose work are in the museums and galleries this month. I do hope to see you at the opening of *Art Speaks! Lend Your Voice* at Arena 1 Gallery on Thursday, 2/22/18 from 5 to 8 pm.

IN THE GALLERIES:



I am quite excited about the upcoming exhibition at [Hauser and Wirth](#) of previously unseen works on paper by **Louise Bourgeois** (1991-2010). The works in the exhibition, entitled *The Red Sky* (image left), were created between 2007 and 2009. They provide a glimpse into one part of her oeuvre and reinforce how essential writing, drawing and printmaking were in this amazing sculptor's artistic practice. I will very likely be at Hauser/Wirth on Friday, 2/23/18 at around 2:30 pm to view and discuss Louise Bourgeois if you would like to join me.

Also at Hauser and Wirth is **Geta Brătescu: The Leaps of Aesop**. This is the first Los Angeles solo presentation devoted to the 91 year-old forerunner in the field of Romanian Conceptualism (image right). Her diverse oeuvre - comprising drawing, collage, engraving, textiles, and photography, as well as experimental film, video and performance mines themes of identity, gender and

dematerialization, often drawing from the stories of literary figures and addressing the symbiotic relationship between art making and working environments environments. Aesop, the ancient Greek fabulist, serves as a point of departure for this exhibition, which features more than fifty works that

span Brătescu's career. In many ways a fitting avatar for Brătescu, Aesop manifests in the works on view as a symbol of antic irreverence, mocking authority and status. A spirited believer in the role of the artist as that of a disruptor, Brătescu has championed ideas of play and disorder throughout her vibrant practice, remarking, 'there is much economy and at the same time rebellion in the creation of expression' (from the gallery website).



[Regen Projects](#) presents **Catherine Opie's** first film, *The Modernist*. The film is 22 minutes in length and is composed of over 800 black and white still images. Runs thru 2/18/18.

[Anat Ebgi](#) Gallery is pleased to announce *Sunset*, the first solo exhibition of **Caroline Walker** in Los Angeles (image left). The exhibition focuses on the figure of a woman within the psychological spaces of a modernist Hollywood Hills home. Large scale paintings as well as works on paper are featured. Runs thru 3/3/18.



Lisa Seebach's *Soft Architecture* is the current exhibition at at Meliksetian/Briggs Gallery (image right). This Berlin-based artist has made a site-specific installation consisting of five individual sculptures, three wall-works and two floor pieces, comprised of steel and ceramic components. Seebach's sculptures are made in relation to the human form and its dynamics of how the body interacts with the sculptural form. Each sculpture conjures an amplified moment both elegant and fragile, evoking a space containing something of a thought. "The title of the exhibition, *Soft Architecture*, relates to the artist's conception of a psychological structure governing the installation: her memories of architectural settings and architectonic forms in the built environment of the city and living spaces combined with heightened psychic tension and mental consciousness, emotions and sensations." Runs thru 2/24/18.



[Hive Gallery](#) on Spring St. presents *Stitch Fetish 6* curated by **Ellen Schinderman** featuring works by **Meghan Willis** and **Rebecca Levy**. Runs 2/2/18 thru 2/25/18. Opening reception on Saturday, 2/3/18 from 8 to 11 pm.

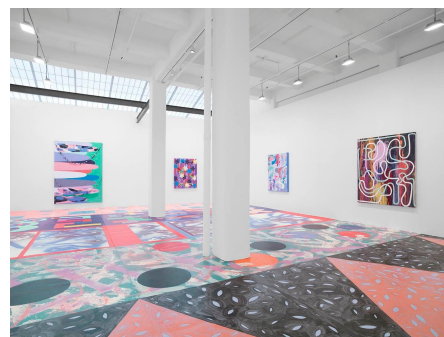
[The Box Gallery](#), in the Arts District presents *Time Smear*, an exhibition of work by **Simone Forti**. Forti, an American Italian artist, began her career as a dancer. She is known for her performances and post-modern works. Runs thru 3/24/18.



[Art +Practice](#) presents **Maren Hassinger: The Spirit of Things** surveying the extensive career of the multi-talented artist (image left). This exhibition presents sculpture, performance documentation and videos that explore the emotional dynamics of relationships among different communities of people and between them and the environments in which they live. Runs 2/24/18 thru 5/26/18. Opening reception on Saturday, 2/24/18 from 2 to 5pm.

Now I'm going to tell you everything is the inaugural project for [ICA LA](#)'s courtyard wall on 7th Street, a large-scale temporary work by Los Angeles-based artist **Sarah Cain** (image right).

Spanning 800 square feet, this new work takes its title from a poem written for the artist by celebrated poet **Bernadette Mayer**. Cain's abstract paintings often flirt with installation, unfolding across walls and floors, uncontained by the frame of the canvas. Recent work incorporates furniture, textiles, jewelry and found objects as a way to break up the experience of painting as a two-dimensional



form. Her vivid, playful patchwork of lines and shapes resist simple definition, recalling styles as diverse as abstract expressionism, graffiti, Pop and Feminist craft.

IN THE MUSEUMS:



[Lancaster MOAH](#) presents three outstanding exhibitions opening this month. *Memory and Identity: The Marvelous Art of **Betye, Lezley, and Alison Saar*** (image left) curated by **Betty Ann Brown** and *It Takes a Village*, a group exhibition of works by **Betye Saar, Lezley Saar, Alison Saar**, Wyatt Kenneth Coleman, Richard S. Chow, **List Bartleson** and **Jane Szabo**. Additionally, at MOAH Cedar is *Continuum: **Monica Wyatt***, her first installation in collaboration with curator, **Jill Moniz**. Runs 2/10/18 thru 4/22/18. Opening reception on Saturday, 2/10/18 from 4 to 6 pm.

[Pomona College Museum of Art](#) presents *Muse: **Mickalene Thomas** Photographs tête-a-tête* (image right). While working across multiple series, much of her photographic work functions as a personal act of staging and reappropriation both of images she has created herself and images she has singled out as influence. Thomas's portraits draw equally from 1970s black-is-beautiful images of women such as supermodel Beverly Johnson and actress VONETTA McGEE; Édouard Manet's odalisque figures; and the mise-en-scène studio portraiture of James Van Der Zee and Malick Sidibé, to mention a few. This exhibition and accompanying publication are the first to gather together her various approaches to photography, including C-prints, collages and Polaroids. The exhibition at Pomona College also includes an installation that represents the artist's studio, a tableau depicted in the photographs. Runs thru 5/13/18.



[USC Fisher Museum of Art](#) presents ***Senga Nengudi: Improvisational Gestures***. Nengudi is known for her amazing conceptual and performance work (image left). This is an extensive exhibition representing decades of her interdisciplinary practice. She often draws from collaboration with other artists and disciplines, including dancers and musicians. Blending natural and synthetic materials, including pantyhose, rubber and sand, her sculptures often await the activation of a human body, marking and mystifying the dynamic intimacy between us and the matter that we move through. Runs thru 4/14/18.



Opening later this month at [The Main Museum](#) is ***Dora De Larios: Other World*** (image left). The exhibition highlights the late artist's ceramic works. In her six decade-long career, De Larios' work has long been undervalued. She operated outside of the gallery system by necessity, carving space for her and her work by starting Irving Place Studio, an independent studio practice, and through large-scale commissions in California, Hawaii, Tahiti, and Japan. Her identity as a Mexican-American woman in a male-dominated art

world is deeply reflected in her concentration on and focus on the feminine form in her works. Runs 2/25/18 thru 5/13/18.

[Frederick Weisman Museum of Art](#) at Pepperdine University presents **Alexis Smith: Private Lives and Public Affairs**. For over 40 years, Smith's art has explored the depths of popular culture. She begins with an array of images ranging from thrift-store finds to nostalgic advertisements and juxtaposes them with poetic and poignant texts. Her art underscores how the media shapes our self-image and reminds us that meaning is often transitory and always surprising. Runs thru 4/1/18.

[The Pasadena Museum of California Art](#)'s upcoming exhibition is *The Feminine Sublime*. The exhibition will feature paintings that provide a feminist perspective about the concept of the sublime. Exhibition artists and Los Angeles-based painters **Merion Estes, Yvette Gellis, Virginia Katz, Constance Mallinson** and **Marie Thibeault** counter traditional landscape painters and enlist challenging aesthetics, formal inventiveness and provocative imagery to re-



imagine relationships with rapidly changing urban and natural environments in more relevant and meaningful ways. Runs thru 6/3/18.

Ana Serrano: Homegrown will also be presented later this month at PCMA (image left). Serrano's immersive "garden" both references a recognizable urban landscape and pays homage to the artist's family connection to the land in Mexico. Highlighting the juxtaposition of the built environment and plant life, the installation is composed of bright-colored walls and lively plants made of cardboard and paper. Runs thru 6/3/18.

The two outstanding exhibitions at the [California African American Museum](#) are *We Wanted a Revolution: Black Radical Women, 1965-85* and **Lezley Saar: Salon de ReRefusés** (image right). Runs thru 2/18/18.



Unspeakable: Atlas, Kruger, Walker at the UCLA Hammer Museum is a selection of video installations from the Hammer Contemporary Collection organized by chief curator **Connie Butler**, chief curator **Annie Butler** and director **Ann Philbin**.



The exhibition features major works by American artists Charles Atlas, **Barbara Kruger** and **Kara Walker** (image left) created in the last decade. Among these is Kruger's *The Globe Shrinks*, a four-channel, 13-minute compilation of video and text that narrates in a series of scenes and skits the conflicting coexistence of kindness and brutality. I was transported in a five-channel installation by Walker that touches on the Civil War, the slave Sally Hemings, the artist's studio and the genocide in Darfur. In this work, Walker's signature silhouettes playing out haunting

emotional vignettes are flat hand puppets set against vividly colored backgrounds and accompanied by a soundtrack of country music. Runs thru 5/13/18.

Don't miss this wonderful Getty PST LALA exhibition titled *Another Promised Land: Anita Brenner's Mexico* continuing at the [Skirball Cultural Center](#). It offers a new perspective on the art and visual culture of Mexico and its relationship to the United States as seen through the life and work of the Mexican-born, Jewish-American writer **Anita Brenner** (1905-1974). Runs thru 2/25/18.

email: enews@scwca.org
web: <http://www.scwca.org>

2/17/2018

Gmail - Fw: SCWCA February eNews

Southern California Womens Caucus for Art, [5161 Inglewood Bl, Culver City , CA 90230](#)

SafeUnsubscribe™ karen.j.schifman@csun.edu

[Update Profile](#) | [About our service provider](#)

Sent by enews@scwca.org in collaboration with



[Try it free today](#)

--
Sent from somewhere in space.