

Hello Dear Friends,

My message to you this month is a note of gratitude, shared change and optimism for the future. It has been my privilege to represent SCWCA as the Chapter President these past few years and my term will soon end on October 1, 2017. I am deeply grateful for the adventures we have shared and it is with eager anticipation I look forward to the art we make as individual artists and what we accomplish together collaboratively in the coming years.

I am pleased to announce this month we welcome a new Board Director, Ann Storck!! She is a longtime chapter member and brings great organizational skills to the Board. Her art has been exhibited broadly throughout Los Angeles and you can learn more about Ann and her work on her artist registry page on the SCWCA website. On behalf of the SCWCA members and Board of Directors, thank you Ann!

As some of you may know, the SCWCA website has been going through an overhaul, building on the awesome existing site. The new look has launched and it will be an ever-evolving place to visit. Our website will continue to grow in content and some of the pages will take on a new look in the next couple of weeks. As we near the 2018 WCA Los Angeles Conference, "Art Speaks: Lend Your Voice," you can look to scwca.org for updates and opportunities to participate as well as ongoing chapter updates and news.

This month's eNews edition offers many insights about artist opportunities and work being shown around town. Please see below for details.

With Gratitude,
[J. Cheryl Bookout](#)
Chapter President



CALL FOR ART IS NOW OPEN
Neutra Gallery
October 14 - 29, 2017

SCWCA artists are encouraged to submit a current artwork on the theme of "phenomena" whether approached through a human or natural, intuitive or observed lens. The exhibition will explore our artistic response to living in a rapidly changing, often challenging and ever so interconnected world. The exhibition will be held at the Neutra Institute and Gallery in Silverlake.

Each member may submit one recent artwork. Media may include painting, photography, drawing, prints, digital art, mixed media, sculpture and videos. All 2D

artwork must not exceed 36" in any direction and sculpture (including pedestal footprint) must not exceed 24."

There is a \$10 required entry fee and work must be submitted in advance using the EntryThingy portal at <http://www.entrythingy.com/d=scwca.org#show=3862>.

The submission deadline has been extended to Thursday, 9/21/17.

Send questions to **Shelley Heffler** and **Karen Schifman** at scwcashows@gmail.com.

SUMMER SOCIAL - Saturday, August 26 in the Palisades

Thanks to all of you who attended the fourth annual Summer Social & Art Share and contributed to it being such a success!



CONFERENCE MEET-UPS START SOON!

SCWCA will be a major contributor in making the 2018 "Art Speaks! Lend Your Voice" a conference to remember. It's also a huge networking opportunity. The chapter is organizing the national exhibition of the same title at Arena One Gallery and a bus tour with several special events for visiting members. There are lots of participation opportunities. We really need chapter volunteers to help plan and coordinate. Please email [Sandra Mueller](mailto:Sandra.Mueller@scwca.org) with your preferred meeting dates and locations (Westside, San Fernando Valley, etc.). Special thanks to **Marie Cenkner**, **Ann Storc**, **Shelley Heffler** and others who have already volunteered!

SOCIAL MEDIA CHAIR OPPORTUNITY!

SCWCA is looking for a member who can serve as our Social Media chair. Please send a note of your interest to [Danielle Eubank](#).



MEMBERSHIP

To pay by credit card go to [National WCA](#). Be sure to select "CAS" as your chapter from the tab called "Member-at Large." You can also update your contact info or join a national caucus of special interest. To pay by check contact SCWCA Treasurer [Karen Schiffman](#). Fees cover both your national and chapter memberships for the calendar year. Starting in October, your dues will support a membership for the 2018 calendar year.

SUPPORT WCA TODAY!

You can support WCA by shopping [AmazonSmile](#) or make a donation online at [nationalwca.org](#).

JOIN US ON FACEBOOK!

SCWCA now has one Facebook page. Please visit us at: <https://www.facebook.com/groups/124466755570/>

SCWCA MEMBER NEWS

To submit a member announcement, email enews@scwca.org by the 20th of the month and include the url for the venue. JPEGs are published on a space available basis.

Linda Vallejo's work is featured in several LA/LA exhibitions including "Keepin' It Brown" at [bG Gallery](#) in Santa Monica thru 10/8/17. Artist Walk-Through with **Shana Nys Dambrot** on Sunday, 10/1/17 at 2 pm. "LA/Landscapes: Real and Imagined" is at [Studio Channel Islands](#) and runs 9/15/17 thru 11/18/17. She is curator of "El Dia de Los Muertos: Past, Present and Future," which runs 9/17/17 thru 2/24/18 at [Self Help Graphics](#) in Los Angeles.

Works by **Mariona Barkus** are included in "Mother and Child" at the [El Camino College Art Gallery](#). Runs thru 9/21/17.

Pamela Benham has a piece in an exhibition at the Pacific Western Bank at [30 E. Figueroa Street](#) in Santa Barbara. Runs thru 10/15/17.



J. J. L'Heureux has a current solo exhibition titled "Faces from the Southern Ocean" at the Houston Museum of Natural Science (image left). Runs thru 3/18/18. She is also included in the group exhibition "Reality of Nature" at Launch LA. Runs thru 9/30/17.

Brenda Hurst is showing a piece in the encaustic show "Illuminations" at [Chaffey Community Museum of Art](#) in Ontario. Runs thru 10/1/17.

Shelly Heffler has a solo show in Prescott at the [Valley Verde Art Gallery](#). Runs from 9/16/17 thru 10/12/17.

Cheryl Bookout and **Nurit Avesar** had work selected by **Kim Abeles** for the "2017 All Media Open" at [Irvine Fine Arts Center](#). Runs thru 10/28/17.

Barbara Margolies will have three mixed-media 3D pieces in "...scapes" at the [Fred Kavli Theatre Gallery](#) in the Civic Arts Plaza in Thousand Oaks. Runs thru 11/14/17.

Bruria Finkel, in conjunction with the Jewish Art Salon of New York City, will be participating in the 3rd Jerusalem Biennale with the theme of "Watershed," which runs 10/1/17 thru 11/16/17. She will create an installation called "Salt Mound." It is a symbolic artwork that addresses the deterioration of the Dead Sea and its slow demise. This exhibition will then travel to the [Dorfner Judaica Museum](#) in New York. Runs 10/1/17 thru 11/16/17.

SCWCA ARTIST REGISTRY - KATHLEEN THOMA

The featured Artist Registry member this month is [Kathleen Thoma](#). She says creating is a form of meditation that keeps her in a state of active reception to whatever is happening around her and going on inside her as she works. Her images explore the tensions between wild emotions and stable containment. She strives for balance between the opposing natures of rational thought and the pure colors of emotional insight. Her primary medium is monotype printmaking but she also makes drawings and uses chine-colle at times. She cuts her own stencils, which seem to grow into the shapes they want to be. The organic, repeated sinuous lines of Art Nouveau have definitely influenced her work. The monotype image on the right is titled *Gyrating Dreams*.



The Artist Registry is a free benefit for SCWCA members. If you wish to create or update a page please email [Ann Isolde](#). You must be a current member of the chapter for your page to be included online.

ARTIST CALLS

[Momentum Directory](#). The Institute for Women and Art. Ongoing.

[College Art Association](#). Calls and Opportunities. Ongoing.

[California Arts Council](#). Artist Calls. Ongoing.

[GYST](#). Artist Opportunities. Ongoing.

[Lunch Ticket](#) (journal) calls for visual art and written submissions. Ongoing.

WOMEN AROUND TOWN

by Karen Schifman

I encourage you to submit your artwork on "[entrythingy](#)" for our upcoming members show titled **PHENOMENON**, which will be on view at the Neutra Museum from 10/14/17 thru 10/29/17. The submission deadline has been extended to 9/21/17.

[The Getty Initiative Pacific Standard Time: LA/LA](#) is a far-reaching and ambitious exploration of Latin American and Latino art in dialogue with Los Angeles. We are so fortunate to have these stimulating and important exhibitions to visually embrace.

Many of the current exhibitions are included below.

IN THE GALLERIES:

"L.A. WOMAN" is a new exhibition on view in Santa Monica and online at [Saatchi Art](#). It is curated by

Katherine Henning and **Victoria Kennedy** with guest curator **Vanessa Prager**.

Fifteen woman artists' work will be highlighted: **Shawna Ankenbrandt, Hilary Baker, Mitsuko Brooks, Kelly Brumfield-Woods, Mercedes Helnwein, Melissa Herrington, Mel Kadel, Tahnee Lonsdale, Sona Mirzaei, Sophie Morro, Monica Perez, Lisa Solberg, Stephanie Vovas, Kim West, and Hiejn Yoo.**

Runs 9/14/17 thru 1/31/18. Opening Reception on Thursday, 9/14/17 from 6 to 9 pm. [RSVP](#) here.

"Revolution and Ritual: The Photographs of **Sara Castrejón, Graciela Iturbide** and **Tatiana Parceró**" is Scripps College's contribution to the Getty LA/LA initiative in their [Ruth Chandler Williamson Gallery](#). The exhibition focuses on the works of three Mexican women (images on the right) photographers who explore and transform notions of Mexican identity in images that range from the documentary to the poetic. Runs thru 1/7/18.



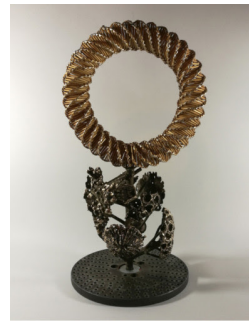
Also part of
LA/LA is
the
exhibition
"**Judithe**"



Hernández and Patssi Valdez: One Path Two Journeys
at

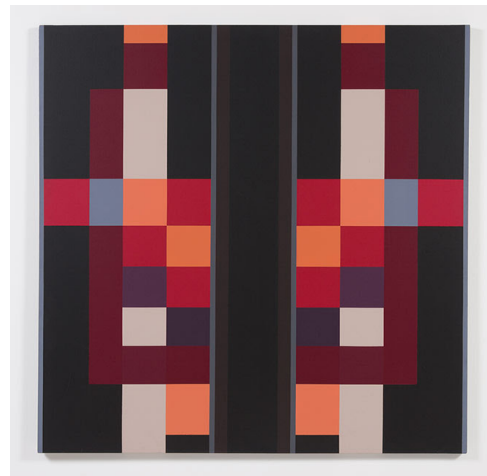
[The Millard Sheets Art Center in Pomona](#). The two artists took seemingly parallel paths from their childhoods in East L.A. to their coming-of-age during the Chicano Civil Rights Movement in the 1970s. Hernández (image left) was the fifth artist (and the only woman) invited to join the collective Los Four and Valdez was a founding member (and the only woman) in the Asco group. Both went on to successful individual careers. In addition to displaying photographs and other materials to contextualize their participation in these important artist collectives, the exhibition will bring their current works together for the first time, including a new collaborative installation. Runs thru 1/28/18.

"Phantasmata" is the current exhibition of work by **Cathy Ward** (image right) at [The Good Luck Gallery](#). Her exhibition includes a bronze sculpture incorporating pagan ritual symbolism, exquisite ink drawings on translucent amoeba-shaped mother-of-pearl (Diluvian Sculptures) and two distinct gesso-on-ink portrait series, "Sprites and Spirits," depicting supernatural entities in a style that ranges from action painting to precise draftsmanship, resembling vintage hi-contrast micrographs of cellular structures. Runs thru 10/15/17.



[Susanne Vielmetter Los Angeles Projects](#) in Culver City presents "**Whitney Bedford: The Left Coast**." In this new series of paintings, Bedford "reconsiders the idea of the frontier as a stage where the myths of exploration and manifest destiny are re-enacted through familiar characters from the Southern California landscape: cacti and palms." Runs thru 10/10/17.

Columbian born artist, **Fanny Sanín**'s career is highlighted in the current exhibition at [L.A. Louver Gallery](#) (image right). With a career spanning five decades, she is extremely prolific with a focus on geometric abstraction in her paintings, drawings and prints. Runs 9/12/17 thru 11/04/17.



"Article 16: Selected works by **Lisa Schulte**" is the current exhibition at [Porch Gallery](#) in Ojai (image left). The title refers to a municipal code in the city of Ojai: "No neon signs or architectural elements are allowed in the City with the exception of a two (2) square foot "OPEN" neon sign allowed for commercial businesses." This is the perfect impetus for work by the artist who has earned the moniker "neon queen." Schulte creates elegant pieces of work that flip the original connotations associated with the materials. She juxtaposes unexpected materials with her neon sculptures. Rough branches become fetishized and sexy, while the neon, often considered the most garish and commercialized of materials, flows around the sculpture like glowing roots infusing grace and movement into the pieces.

Longtime SCWCA member **Suvan Geer** has a spectacular installation (image right) at the Cal State University Fullerton [Begovich Gallery](#). "What we saw of it..." is an inquiry into the experience of memory. Not a single memory, but rather the experience of remembering with all its slips and slides, moments of clarity and repeated forgetting." The artist uses multiple video projections, a circling boat made of wind-fall pine needles and fragments of pages torn from her journals. With these materials, "she creates a darkened territory of ongoing motion, appearance and disappearance." Runs thru 12/7/17. Artist's lecture on Saturday, 9/23/17 from 4 to 5 pm.



IN THE MUSEUMS:



"Laura Aguilar: Show and Tell" is the first comprehensive retrospective of her work (image left). The exhibition is also part of LA/LA at the [Vincent Price Museum](#). It will feature over 100 works produced during the past three decades. Aguilar's highly personal and political imagery intersect performative, feminist and queer art genres. Runs 9/16/17 thru 2/10/18.

"Sarah Charlesworth: Doubleworld" is an outstanding exhibition currently at [LACMA](#) (image right). Charlesworth (1947-2013) was one of the key figures of what is known as the "Pictures Generation." Her influence in using photography of art is well demonstrated in these selections. Runs thru 2/4/18. For more about this exhibit go to: [KCRW](#)



Opening this month is the long-anticipated exhibition at the [UCLA Hammer Museum](#) titled "Radical Women: Latin American Art 1960-1985." This show is part of LA/LA and is curated by **Cecilia Fajardo-Hill** and **Andrea Giunta** with **Marcela Guerrero**, curatorial fellow. The exhibition will give visibility to the artistic practices of women artists working in Latin America and U.S. born women artists of Latino heritage between 1960 and 1985. Fifteen countries will be represented in the exhibition by more than 100 artists with 260 works in photography, video and other experimental mediums. Among the women included are emblematic figures such as **Judy Baca**, **Lygia Clark**, **Sonia Guiterrez**, **Yolanda Lopez**, **Ana Mendieta** and **Marta Minujín**. This groundbreaking exhibition will include the first genealogy of feminist and radical art practices in Latin America and their influence internationally, thereby addressing an art historical vacuum. Runs thru 12/31/17.

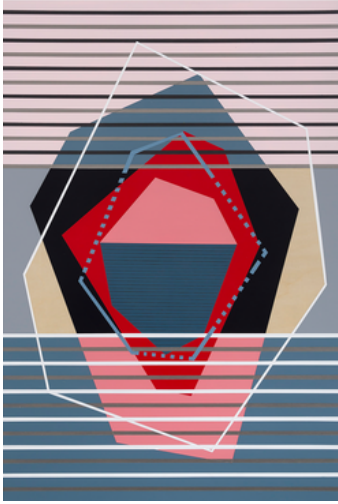
Among the many amazing exhibitions that are part of LA/LA is **"Anna Maria Maiolino"** at [MOCA](#) (image right). In this first retrospective in the United States, MOCA brings together over five decades of paintings, drawings, videos, performances, sculptures and large-scale installations to chart the path of an extraordinary artist. This major mid-career survey focuses on the artist's more than 25-year exploration into ideas of time, narrative, memory and the senses demonstrated in her installations utilizing found and fabricated objects. Runs thru 12/31/17.



"Lineage through Landscape: Tracing Egun in Brazil" is a multifaceted drawing project by **Fran Siegel** currently on view at the [UCLA Fowler Museum](#) (image left). This is another example of Pacific Standard Time LA/LA. The project is the result of



of colonialism and slavery in Brazil, Siegel's project can be read as a highly-charged landscape of black Brazil, built from fragments that embrace its African roots." Runs thru 12/10/17.



"The Avalanche and The Silence" new works by **Linda Arreola** is the upcoming exhibition at the [Carnegie Museum](#) in Oxnard (image left). Arreola explores the bipolar oppositions of serenity and chaos in this series of geometric paintings. Runs thru 11/19/17.

"Another Promised Land: Anita Brenner's Mexico" at the [Skirball Cultural Center](#) offers a new perspective on the art and visual culture of Mexico and its relationship to the United States as seen through the life and work of the Mexican-born, Jewish-American writer **Anita Brenner** (1905-1974). Brenner was an integral part of the circle of Mexican modernists in the 1920s and played an important role in promoting and translating Mexican

art, culture and history for audiences in the U.S. Brenner was close to the leading intellectuals and artists active in Mexico, including José Clemente Orozco, Frida Kahlo, Diego Rivera, David Alfaro Siqueiros, Jean Charlot and Tina Modotti. Runs 9/14/17 thru 2/25/18.



Photo of Anita Brenner by Tina Modotti

email: enews@scwca.org
web: <http://www.scwca.org>

Southern California Womens Caucus for Art, [5161 Inglewood Bl](#), [Culver City](#) , CA [90230](#)

SafeUnsubscribe™ cherylbookout@gmail.com

[Update Profile](#) | [About our service provider](#)

Sent by enews@scwca.org in collaboration with

Constant Contact® 

Try it free today