

SCWCA eNEWS**Southern California Women's Caucus for Art**November
2017

Dear SCWCA Members,

My first month as president has been filled with exciting events. Our members-only art exhibition, "Phenomena," at the Neutra Institute Museum and Gallery opened with anticipation and a packed house. With 43 diverse works ranging from textiles and sculpture to photography, paintings and mixed media, the gallery was filled with an aura of pure joy. The title of the show emphasizes the extraordinary gifts of the talented artists in our community.

A big thank you goes out to **Marie Cenkner** for arranging the art in the gallery and to **Karen Schiffman** for her role in everything from the organization of the exhibition, securing the location, printing the announcement cards, to food and wine and all the minutiae. Special thanks also to **Danielle Eubank** for designing the exhibition logo. Without them, this exhibition would never have happened.

Congratulations to all who participated: **Robyn Alattore, Carolyn Applegate, Nurit Avesar, Mariona Barkus, Yvonne Beatty, Pamela Benham, Lucy Blake-Elahi, Cheryl Bookout, Mary Brock, Janine Brown, Karen Hochman Brown, Ellen Cantor, Marie Cenkner, Ava Childress, Krystee Clark, Terry Cooper, Marsh Drucker, Danielle Eubank, Ellen Freyer, Marla Fields, Dwora Fried, Shelley Heffler, Brenda Hurst, Ann Isolde, Linda Kunik, Noreen Larinde, Sandra Lauterbach, Lynn Letterman, J.J. L'Heurux, Amy Longcope, Sandra Mueller, Meliss Reischman, Sinan Leong Revell, Seda Saar, Karen Schiffman, Nancy Spiller, Anne B. Schwartz, Ann Storck, Patricia Terrell-O'Neal, Robin Tripaldi, Frances Vandal, Leslie Wallstedt** and our newest member **Graciela Nardi**.

Looking ahead, we have some amazing programs in store. The National WCA conference will be in Los Angeles in 2018. "Art Speaks! Lend Your Voice" is the theme and will include discussion panels, the Lifetime Achievement Awards and two exhibitions. It runs February 22 thru 25, 2018. Visit <http://www.nationalwca.org/conference/currentconfer.php> for all of the details.

The exhibition at Arena 1 Gallery will be juried by local curator **Jill Moniz** and the Young Women's Caucus exhibition "Reality Sandwiches" at ArtShare LA will be juried by artist **Alison Saar**. Call deadlines have been extended to Wednesday, November 8th. Please mark your calendars for January 20 as we will be having a special "ART MATTERS" skill share and networking event. Details to follow.

This brings to mind the opportunities that membership provides. When you participate in events such as submitting to exhibitions, helping to set up shows, organizing workshops or attending our other programs, you are contributing to the conversation and collaboration that makes our community a collective for enriching relationships. A welcome goes out to our new members, **Ellen Cantor, Kate Caravellas, Ava Childress, Terry Cooper, Pam Douglas, Wight Drucker, Tina Eick, March Amy Longcope, Graciela Nardi** and **Dulce Stein**.

With Thanksgiving around the corner, it gives me pause to review this year, to be grateful for all the people I have met through this organization and the opportunities that lay ahead. I hope you join me in a fruitful collaboration of our collective talents.

Warmest regards,
Shelley Heffler

2018 NATIONAL WCA CONFERENCE EXHIBITION



ART SPEAKS! LEND YOUR VOICE

Arena 1 Gallery, Santa Monica, CA

February 21-March 10, 2018

Juror: Jill Moniz

SUBMISSION DEADLINE:

Thursday, 11/9/17 at 11:59 pm

<http://www.entrythingy.com/www.nationalwca.org#show=3990>

Email wcashows@gmail.com with questions.

The Women's Caucus for Art invites submissions from artists at all career stages for the 2018 national conference exhibition on the theme of "Art Speaks! Lend Your Voice!" The theme may be broadly interpreted from a political, personal or formal context in a variety of media. Surprise us with your interpretation.

The exhibition takes place in the spacious Arena 1 Gallery at Santa Monica Studios. Works will be selected by curator **Jill Moniz** whose projects focus largely on women and people of color. A full color catalog will be published.

The call is open to all self-identified women artists who reside in the U.S. Artists may submit up to three pieces of work in any media per entry and may submit two separate entries. Video works are limited to two submissions. Work must be original and available for duration of exhibition.

Art Educators: Please encourage your students to participate! WCA is also hosting a one-week conference exhibition for young women artists aged 18-35 entitled "Reality Sandwiches." It will take place at ArtShare LA and artist **Alison Saar** is the juror.

Deadline is Friday, 11/17/17.

[More at http://www.entrythingy.com/www.nationalwca.org#show=4026](http://www.entrythingy.com/www.nationalwca.org#show=4026)

UPCOMING PROGRAM: Mark Your Calendar

California African American Museum Meet Up and Tour

Friday, 11/10/17 at 10:30 am

We will be viewing two outstanding exhibitions:

"We Wanted a Revolution: Black Radical Women, 1965-85" and

"Lezley Saar: Salon des Refusés"

RSVP to [Karen Schiffman](#)

\$3.00 donation per person

SAVE THE DATE :

Art Matters: Skill Share Day
Saturday, 1/20/18
1 to 5pm - Details to follow



The Closing Reception for Phenomena at the Neutra Institute Museum and Gallery on Saturday, 10/28/17 was a great way to end a beautiful show. Participating artists had the opportunity to talk about their works and guide visitors through the exhibition.





SOCIAL MEDIA CHAIR OPPORTUNITY!

SCWCA is looking for a member who can serve as our Social Media chair. Please send a note of your interest to [Danielle Eubank](#).

MEMBERSHIP

To pay by credit card go to [National WCA](#). Be sure to select "CAS" as your chapter from the tab called "Member-at Large." You can also update your contact info or join a national caucus of special interest. To pay by check contact SCWCA Treasurer [Karen Schiffman](#). Fees cover both your national and chapter memberships for the calendar year. Starting in October, your dues will support a membership for the 2018 calendar year.

SUPPORT WCA TODAY!

You can support WCA by shopping [AmazonSmile](#) or make a donation online at nationalwca.org.

JOIN US ON FACEBOOK!

SCWCA now has one Facebook page. Please visit us at: <https://www.facebook.com/groups/124466755570/>

SCWCA MEMBER NEWS

To submit a member announcement, email enews@scwca.org by the 20th of the month and include the url for the venue. JPEGs are published on a space available basis.

Our new President **Shelley Heffler** has been chosen for a residency for Winter 2017 at 360 Xochi Quetzal in the area of Lake Chapala, Mexico.

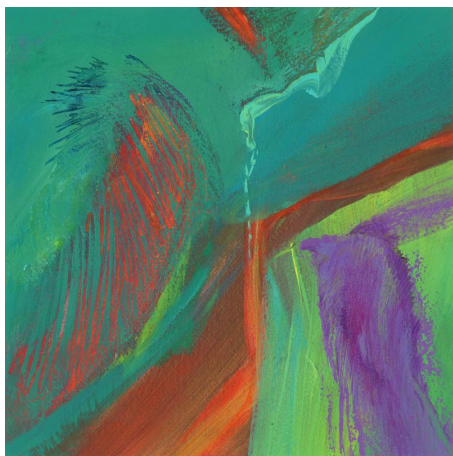
Linda Vallejo will be featured in three Getty PST LA/LA exhibitions in November and December including "Imagen Angeleno" at the [Lancaster Museum of Art and History](#) opening Saturday, 11/11/17; "Ghetto Gloss: The Chicana Avant-Garde, 1980-2010" at [Bermudez Projects](#) also opening on Saturday, 11/11/17; and "A Universal History of Infamy: Those of This America" at [LACMA Charles White Gallery](#) opening on Monday, 12/4/17. She will also be included in "One Year: The Art of Politics in Los Angeles" at the [Brand Library](#) opening on Saturday, 11/18/17.

Sandra Lauterbach (image right) has two works in "Bread and Salt: The Art of Jewish Food at [UCLA Hillel](#) that runs thru 12/17/17 and another work in "As Near to the Edge As I Can Go" at the [Chandler Center for the Arts](#) in Chandler, AZ. Runs 11/17/17 thru 1/18/18.



Barbara Margolies will have three mixed-media 3D pieces in "...scapes" at the [Fred Kavli Theatre Gallery](#) in the Civic Arts Plaza in Thousand Oaks. Runs thru 11/14/17.

Bruria Finkel, in conjunction with the Jewish Art Salon of New York City, will be participating in the 3rd Jerusalem Biennale with the theme of "Watershed." Runs thru 11/16/17. She created an installation called "Salt Mound."



It is a symbolic artwork that addresses the deterioration of the Dead Sea and its slow demise. This exhibition will then travel to the [Derfner Judaica Museum](#) in New York.

Pamela Benham's paintings (image left) were chosen by curators Rosemarie Gebhart and Marcello Ricci for the exhibition "Eyes of Another" at [The Arts Fund Gallery](#) in the Funk Zone, Santa Barbara. Opening reception is Friday, 11/10/17 from 5 to 8 pm. Runs 11/10/17 thru 1/7/18. On the same dates Benham's works can also be seen in the "Artists Group Show" in the [GraySpace Gallery](#) in the Funk Zone.



The featured Artist Registry member this month is [Ann Storc](#). She makes acrylic paintings that reflect her interests in life, so her subject matter is always different. However, she loves doing portraits because it allow her to capture the essence of her subjects. She has not only produced portraits of her family and friends, but sometimes photographs interesting subjects and recreates them in a

SCWCA ARTIST REGISTRY - ANN STORC

painting. One of her favorite pieces is of her 2009 advanced art students (image left). It contains miniature images of the eighteen students on one canvas. Each of their personalities shines through the paint.

The Artist Registry is a free benefit for SCWCA members. If you wish to create or update a page please email [Ann Isolde](#). You must be a current member of the chapter for your page to be included online.

ARTIST CALLS

[Momentum Directory](#). The Institute for Women and Art. Ongoing.

[College Art Association](#). Calls and Opportunities. Ongoing.

[California Arts Council](#). Artist Calls. Ongoing.

[GYST](#). Artist Opportunities. Ongoing.

[Lunch Ticket](#) (journal) calls for visual art and written submissions. Ongoing.

WOMEN AROUND TOWN

by Karen Schiffman

As our City of Angels continues to be the recipient of the many Getty PST LA/LA exhibitions, it is important to acknowledge that there are other exhibitions that are not part of the project. I am delighted to see so many women artists benefiting from outstanding gallery shows.

IN THE GALLERIES:

[The Brand Library and Art Center](#) presents "ONE YEAR: The Art of Politics in Los Angeles." The exhibition will feature the work of 20 Los Angeles-based artists who engage with political topics as an integral part of their practices. The exhibition presents a multiplicity of voices, constructing a narrative from a wide range of disciplines including video, painting, drawing, fiber arts, ceramics, mixed media and photography. Among the artists exhibiting there are **Kim Abeles, Eileen Cowin, Emily Elisa Halpern, Constance Mallinson, Alexis Smith, Linda Vallejo** and many others. Opening reception on Saturday, 11/18/17 from 6 to 9 pm. Runs 11/18/17 thru 1/12/18.

"The Great Wall of Los Angeles: **Judith F. Baca's** Experiments in Collaboration and Concrete" at the [Cal State Northridge Gallery](#) is a beautifully installed and curated exhibition (image right). Historically significant and yet contemporary, the exhibition is a survey of Baca's contributions as a muralist, mentor, educator and community activist. Note that this show is part of Getty PST LA/LA. Runs thru 12/16/17. A conversation between **Judy Baca** and **Amalia Mesa-Bains** will take place on 12/2/17 at 2 pm.



[Honor Fraser Gallery](#) is pleased to present the

gallery's first exhibition of paintings by pioneer Feminist artist **Miriam Schapiro**. While living in California during the years 1967 through 1975, Miriam Schapiro embarked on a groundbreaking series of paintings made with the aid of computer imaging (image left). The exhibition will feature eight works made between 1967 and 1971. The exhibition marks the first time these works will be seen on the west coast since their making. Runs thru 12/16/17.

[Blum & Poe](#) presents **Lynda Benglis** in her first solo exhibition since her 2011 retrospective at MOCA. The exhibition will provide many samplings of her work over the past three decades of her sculpture practice. It will feature glazed ceramics, examples from her bronze fountain series, large-scale biomorphic aluminum sculptures, a constellation of recent paper wall works and the eleven-foot phosphorescent cast polyurethane *Hills and Clouds* 2014. Glittering handmade paper on chicken-wire armature works hover on the gallery walls. Runs thru 12/16/17.

[Suzanne Veilmetter Projects](#) currently presents a wonderful exhibition of works by **Kim Dingle**. Runs thru 11/10/18. Later this month, work by artist **Shana Lutker** "aka Public Opinion" and "Recent Paintings" by **Harmony Hammond** will be on display.

"Revolution and Ritual: The Photographs of **Sara Castrejón, Graciela Iturbide** and **Tatiana Parceró**" is Scripps College's contribution to Getty PST LA/LA in their [Ruth Chandler Williamson Gallery](#). The exhibition focuses on the works of three Mexican women photographers who explore and transform notions of Mexican identity in images that range from the documentary to the poetic. Runs thru 1/7/18.

"**Merion Estes**: Dispatches from the Front Lines" is the current exhibition at [CB 1 Gallery](#). With beauty as its central theme, the exhibition is the artist's response to the "continuing degradation of our natural world and the corporate greed damaging our waters, air and land without regard for the safety and well-being of the people who inhabit it." The ideas within these paintings come out of the feminist art movement as an exploration into other cultures, their crafts, architecture and decorated surfaces suggesting a way to break out of the confines of formalist, abstract, "pure" modernism and to embrace a more "impure," humanist and experimental art expression. Runs thru 12/22/17.



Also part of Getty PST LA/LA is the exhibition "**Judithe Hernández** and **Patssi Valdez**: One Path Two Journeys" at [The Millard Sheets Art Center in Pomona](#). The two artists took seemingly parallel paths from their childhoods in East Los Angeles to their coming-of-age during the Chicano Civil Rights Movement in the 1970s. Hernández was the fifth artist (and the only woman) invited to join the collective Los Four and Valdez was a founding member (and the only woman) in the Asco group. Both went on to successful individual careers. Runs thru 1/28/18.

The wonderful [Porch Gallery](#) in Ojai presents "When Ice Burns," an exhibition of new work by **Diane Best**. These works were influenced by the ethereal landscape seen in recent trips to Iceland that included a seven-day journey on a 100+ year old wood schooner through the fjords of remote east Greenland. Runs thru 12/4/17.

Longtime SCWCA member **Suvan Geer** has a spectacular installation at the Cal State University Fullerton [Begovich Gallery](#). "What we saw of it..." is an inquiry into the experience

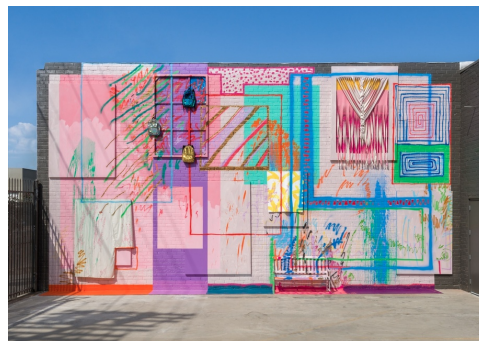
of memory. The artist uses multiple video projections, a circling boat made of wind-fall pine needles and fragments of pages torn from her journals. Runs thru 12/7/17.

IN THE MUSEUMS:



"Laura Aguilar: Show and Tell" is the first comprehensive retrospective of her work (image left). The exhibition is also part of Getty PST LA/LA at the [Vincent Price Museum](#). It will feature over 100 works produced during the past three decades. Aguilar's highly personal and political imagery intersect performative, feminist and queer art genres. Runs thru 2/10/18.

Formerly the Santa Monica Museum of Art (SMMoA), the newly opened [ICA LA](#) is committed to making contemporary art relevant and accessible for all. The inaugural project for ICA LA's courtyard wall on 7th Street is a large-scale temporary work by local artist **Sarah Cain** (image right). The title, "Now I'm going to tell you everything" is from a poem written for the artist by celebrated poet **Bernadette Mayer**. "Cain's abstract paintings often flirt with installation, unfolding across walls and floors, uncontained by the frame of the canvas. Recent work incorporates furniture, textiles, jewelry and found objects as a way to break up the experience of painting as a two-dimensional form. Her vivid, playful patchwork of lines and shapes resist simple definition, recalling styles as diverse as abstract expressionism, graffiti, Pop and Feminist craft." Runs thru 12/31/17.



The wonderful Getty PST LA/LA exhibition titled "The US-Mexico Border: Place, Imagination, and Possibility" continues at the [Craft and Folk Art Museum](#). It presents the work of contemporary artists who explore the border as a physical reality (place), as a subject (imagination) and as a site for production and solution (possibility). Runs thru 1/7/18.

"Sarah Charlesworth: Doubleworld" continues at [LACMA](#). Charlesworth (1947-2013) was one of the key figures of what is known as the "Pictures Generation." Her influence in using photography of art is well demonstrated in these selections. Runs thru 2/4/18. For more about this exhibition go to: [KCRW](#)

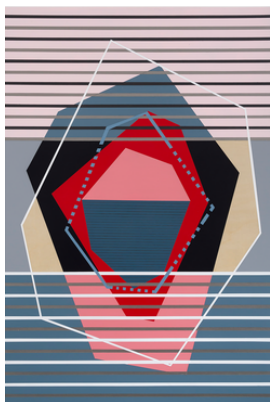
The long-anticipated exhibition "Radical Women: Latin American Art 1960-1985" is at the [UCLA Hammer Museum](#). This show is part of Getty PST LA/LA and provides visibility to the artistic practices of women artists working in Latin America and US-born women artists of Latina heritage between 1960 and 1985. Runs thru 12/31/17.

The [California African American Museum](#) presents two stellar exhibitions opening this month. "We Wanted a Revolution: Black Radical Women, 1965-85" focuses on the work of African American women artists by examining the political, social, cultural and aesthetic priorities of women of color during the emergence of second-wave feminism. The exhibition highlights the voices and experiences of women of color as distinct from the primarily white, middle-class mainstream feminist movement in order to reorient conversations around race, feminism, political action, art production and art history in this significant historical period. The artists represented in the exhibition include **Emma Amos, Camille Billops, Kay**

Brown, Vivian E. Browne, Linda Goode Bryant, Beverly Buchanan, Carole Byard, Elizabeth Catlett, Barbara Chase-Riboud, Ayoka Chenzira, Christine Choy, Blondell Cummings, Julie Dash, Pat Davis, Jeff Donaldson, Maren Hassinger, Janet Henry, Virginia Jaramillo, Jae Jarrell, Wadsworth Jarrell, Lisa Jones, Lois Mailou Jones, Barbara Jones-Hogu, Carolyn Lawrence, Samella Lewis, Dindga McCannon, Barbara McCullough, Ana Mendieta, Senga Nengudi, Lorraine O'Grady, Howardena Pindell, Faith Ringgold, Susan Robeson, Alva Rogers, Alison Saar, Betye Saar, Coreen Simpson, Lorna Simpson, Ming Smith and Carrie Mae Weems (image left).

Also at the [California African American Museum](#) is "**Lezley Saar**: Salon de Refusés" (image right). The exhibition includes three of Saar's most recent bodies of work: *Madwoman in the Attic/Madness and the Gaze*, *Monad* and *Gender Renaissance*, along with a selection of early altered books that show the origins of the artist's interest in literature, mixed media and marginalized figures. Runs thru 2/18/18.

Among the many amazing exhibitions that are part of Getty PST LA/LA is "**Anna Maria Maiolino**" at [MOCA](#). In this first retrospective in the United States, MOCA brings together over five decades of paintings, drawings, videos, performances, sculptures and large-scale installations to chart the path of an extraordinary artist. This major mid-career survey focuses on the artist's more than 25-year exploration into ideas of time, narrative, memory and the senses demonstrated in her installations utilizing found and fabricated objects. Runs thru 12/31/17.



"The Avalanche and The Silence" new works by SCWCA member, **Linda Arreola** is the current exhibition at the [Carnegie Museum](#) in Oxnard (image left). She explores the bipolar oppositions of serenity and chaos in this series of geometric paintings. Runs thru 11/19/17.

The Getty PST LA/LA exhibition titled "Another Promised Land: Anita Brenner's Mexico" continuing at the [Skirball Cultural Center](#) offers a new perspective on the art and visual culture of Mexico and its relationship to the United States as seen through the life and work of the Mexican-born, Jewish-American writer **Anita Brenner** (1905-1974). Runs thru 2/25/18.

Photo of Anita
Brenner by Tina
Modotti

email: enews@scwca.org
web: <http://www.scwca.org>

Southern California Womens Caucus for Art, 5161 Inglewood Bl, Culver City , CA 90230

[SafeUnsubscribe™ {recipient's email}](#)

[Update Profile](#) | [About our service provider](#)

Sent by enews@scwca.org in collaboration with

