

[View this email in your browser](#)

UPCOMING EVENTS

- **October 6, 2019:** Deadline to submit on [Entrythingy](#) for SCWCA All Member Exhibition
- **October 12 thru 26, 2019:** All Member Exhibition at Neutra Institute Gallery & Museum in Silverlake
- **October 19, 2019:** Words & Pictures: A Writing Workshop for Visual Artists
- **November 9, 2019:** Member walk through at Craft Contemporary Museum (details to follow)

PRESIDENT'S MESSAGE

Dear SCWCA members and friends,

I hope all of you had a wonderful summer. I have been busy going to workshops, residencies and soon, a month in Italy. Our recent juried exhibition *PULSE OF LA* at SoLA Gallery was a big success. Thanks to Bryan Frank for his wonderful photos. Please post your photos and any newsworthy events on the SCWCA Facebook page.

Our Art Matters Potluck Brunch at board member Dellis Frank's home in August brought a number of artists together to share and discuss their artwork. The next few months will be filled with more exciting opportunities for our members.

Upcoming events include the SCWCA All Member Exhibition at Neutra Institute Gallery & Museum, an event titled Words & Pictures: A Writing Workshop for Visual Artists with Nancy Spiller, a curator walk through at Contemporary Craft Museum and an Art Matters Potluck Brunch year end celebration.

I want to thank the SCWCA board members who work so hard to make all this happen: Dellis Frank, Lynn Letterman, Sandra Mueller, Melissa Reischman and Karen Schiffman. Also vital to this organization are Cheryl Bookout, who redesigned and maintains the scwca.org website and updates the Member Gallery and Ann Isolde who is the Member Gallery Coordinator and proofs the

[Subscribe](#)[Past Issues](#)[Translate ▼](#)

If you are interested in participating in board meetings, please let us know. The doors are open and we would welcome you. Let's stand together.

Finally, I want to urge you to send information about your upcoming exhibitions and events to scwcaenews@gmail.com. We want to support you by sharing your accomplishments.

To a creative life,
[Shelley Heffler](#)
President

#ENOUGH

In today's political and cultural environment, women have a strong voice. Our artist members are no exception. It is time for us to express our strong opinions about many issues and use our art as a vehicle to do so. This exhibition will demonstrate myriad ways to speak our minds and hearts. Runs October 12 thru 26, 2019.

Opening Reception: Saturday, October 12, 2019 from 1:00 to 4:00 pm

Location: Neutra Institute Gallery & Museum, Silverlake, CA

SCWCA Members Only

Deadline to submit on [Entrythingy](#): October 6, 2019

\$10.00 hanging fee

Drop off: Thursday, October 10, 2019 from 10:00 am to 2:00 pm

Closing Reception and pick-up: Sunday, October 27, 2019 from 2:00 to 4:00 pm

SCWCA 2019 MEMBERSHIP RENEWAL REMINDER

If you have not already done so, please renew your SCWCA 2019 membership online soon.

at <https://www.nationalwca.org>.

Remember to choose CAS for our local chapter.

To renew by snail mail, send a \$75 check payable to SCWCA to

Treasurer Karen Schifman at 16795

SCWCA eNEWS SUBMISSIONS

To share an upcoming exhibition or accomplishment in SCWCA eNews, send the information to scwcaenews@gmail.com by the 15th of the month prior to the month of publication.



Personal Voices / Cultural

[Subscribe](#)[Past Issues](#)[Translate ▼](#)

Community, Los Angeles 1994 - 1996 is now available on [Amazon.com](https://www.amazon.com).



FINDERS AND SEEKERS



This newsletter would like to make it easier for you to link with other artists. If you have an idea, a wish or a helpful resource including but certainly not limited to the ones listed here, help us put the word out.

- Want to start or join a critique group?
- Looking for or need a mentor?
- Trying to develop a community project?
- Wishing you had partners for an art vacation?

Email your name, contact information and what you have or hope to share to Cathy Engel-Marder at culturelink1@yahoo.com by the 23rd of the month. Subject line "Finders and Seekers."



Cathy Salser is seeking individuals to join her in a personal, interactive journey, using the art process to heal from "the legacy of trauma." Cathy is the founder of A Window Between Worlds, an organization that blends art making into the healing process of abuse survivors. She describes her current project as a 30-month durational art piece that will incorporate facilitated in-person workshops and a private Facebook group. Participants will use "touchstones" (small, meaningful, personal creations) "as a resource for healing and change-making in the face of trauma."

Holly Tempo is a new SCWCA member who offers creative mentoring and editing services to artists. She is available to help if you're feeling stuck in your studio practice, need help fine tuning your artist statement or could use the input of a mentor for any other reason. SCWCA members and former students receive a 20% discount, as do those who sign up for two or more mentoring sessions.



Contact Holly for more information at <https://hollytempo.com/page1-Teaching-Consulting.html>.



Words & Pictures: A Writing Workshop for Visual Artists

If every picture tells a story, what does your work have to say? Is it poetry, fiction or personal memoir? This half-day workshop will inspire you to find the narrative tucked into your art. From an introduction to the ancient practice of ekphrastic writing, to samples of acclaimed authors drawing on visual art to lively writing exercises revealing metaphor, telling details, emotions, and attitudes, you'll find new ways to engage with your own visual "statements." The workshop will meet Saturday, October 19, from 1:00 to 4:00 pm at Neutra Institute Gallery & Museum in Silverlake during SCWCA's **#ENOUGH** All Members' Exhibition.

Enrollment is limited to 15 students. Cost is \$20. To sign up and pay for this workshop go to [Entrythingy](https://www.entrythingy.com).

Nancy Spiller is an exhibiting artist, SCWCA member

Cake: Lessons Learned From My Mother's Recipe Box (Counterpoint Press), which she also illustrated. She created a version of this workshop for the UCLA Extension Writers' Program, where she has been an instructor for 10 years.

RECOMMENDED ART AND THEATRE EVENTS

Call a friend and invite them to go to one of these events with you!

SCWCA members are invited to attend *Made in California: Contemporary Art from the Frederick R. Weisman Art Foundation* curated by Billie Milam Weisman

Santa Monica College Pete & Susan Barrett Art Gallery

1310 11th Street, Santa Monica, CA 90401

Gallery Hours: Friday from 12:00 to 5:00 pm and Saturday from 11:00 am to 4:00 pm. For information call: (310) 434-3434

Open House Sunday, September 1, 2019 from 2:00 to 7:00 pm

You may also attend the Opening Reception: Saturday, September 14, 2019 from 6:00 to 8:00 pm.

Runs August 27, thru December 6, 2019



Special invite for SCWCA Members

The Odyssey Theatre Ensemble is offering a \$10 off promotion for SCWCA members who use the code SCWCA when purchasing tickets for the current production titled *Fefu and Her Friends*.

This is a splendidly surreal comedy-drama written by legendary playwright Maria Irene Fornes.

our dedication to women and the arts. The production is a very special one because it is about the female experience, stars an all female cast and the director is a woman. It will be an interactive experience with members of the audience required to move around the theatre for this show. Charles McNulty of the *Los Angeles Times* listed it as a "CRITIC'S CHOICE . . . AN EXCELLENT PRODUCTION."

Order tickets at: <http://www.odysseytheatre.com>

Or call the Box Office: (310) 477-2055 ext. 2

This play runs through September 29, 2019. Tickets cost \$22 - \$27 if you use the SCWCA promotion code.

There is parking directly in front of the theatre for \$5 as well as ample street parking.



We had a fabulous art share at the last Art Matters Potluck Brunch at the home of board member Dellis Frank. The images below show how delightful it was. Stay tuned for more to come.



[Subscribe](#)[Past Issues](#)[Translate ▼](#)

every LABOR DAY
weekend!



There will be one more members meeting before the end of the year. This will be an event you won't want to miss. More information to follow. It will also be the time for our charitable giving campaign. If you have a charity you would like us to target, you can please send your suggestions to: scwcaenews@gmail.com

MEMBER NEWS



Nancy Goodman Lawrence will be showing several figurative works in an exhibition titled *Works WITH Paper* at Castelli Art Space Lorraine Bubar, Tm Gratkowski, Cody Payne, Vero Vonn, and will also be featured in this show.

Castelli Art Space
5428 West Washington Boulevard
Los Angeles, CA 90016

[Subscribe](#)[Past Issues](#)[Translate ▼](#)

Artist Talk: Saturday, September 14, 2019 from 3:30 to 4:30 pm
Gallery Hours: Tuesday thru Friday from 10:00 am to 5:00 pm
Runs August 29 thru September 21, 2019

<https://www.castelliartspace.com>



Anne Schwartz will have work in an exhibition titled *Brushstrokes 2019* curated by Jerry McLaughlin at The San Luis Obispo Museum of Art.

San Luis Obispo Museum of Art
1010 Broad Street
San Luis Obispo, CA 93401

Opening Reception/Awards: September 6, 2019 from 6:00 to 9:00 pm
Runs September 6, 2019 thru October 27, 2019

<https://sloma.org>

Debra Dobkin will have all new work in a solo exhibition titled *Hue & Eye*.

Metro 417 Gallery
417 South Hills Street
Los Angeles, CA 90013

[Subscribe](#)[Past Issues](#)[Translate ▼](#)

2019 from 6:00 to 8:00 pm
Runs September 12 thru October 8, 2019

www.metro417.com



CHECK IT OUT !! ART AND CAKE REVIEW written by David S.Rubin!!
Rethinking Brownness: Brown Belongings by Linda Vallejo at LA Plaza de
Cultura y Artes, Los Angeles. Runs thru January 13, 2020.

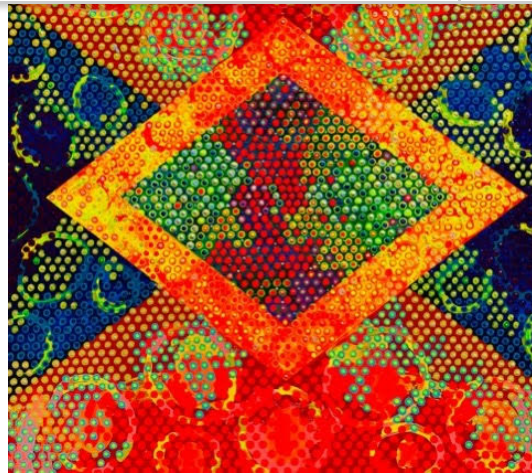
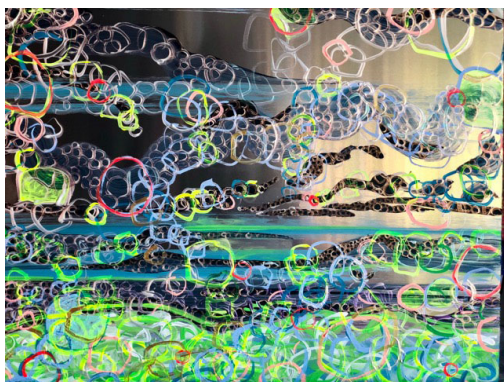
[Art and Cake](#)

[Subscribe](#)[Past Issues](#)[Translate ▼](#)

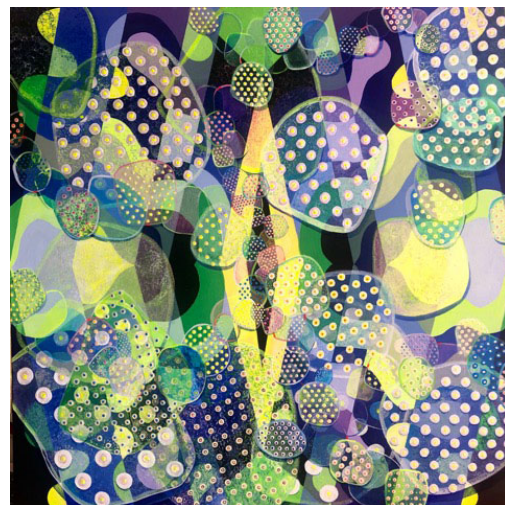
Two of **Kerrie Smith's** paintings have been juried into the *Brushstrokes 2019* exhibition at the San Luis Obispo Museum of Art . Curated by Jerry McLaughlin. The above image is titled *Freedom Flight*.

Opening Reception/Awards:
September 6, 2019 from 6:00
to 9:00 pm
Runs September 6, thru October 27,
2019

<https://sloma.org>



Kerrie Smith has 3 paintings in the *Body & Soul* exhibition juried by Roxanne Sexauer at Westmont Ridley-Tree Museum of Art, Tri-County in Santa Barbara, CA. The above image titled *Equipoise 7 Summer* received Honorable Mention.



Kerrie Smith participated in the Santa Barbara Studio Artists Tour on Labor Day weekend. The above image is titled *Equipoise Dawn*.

Santa Barbara Gallery
1324 State Street, Arlington Place
Santa Barbara, CA

[Subscribe](#)[Past Issues](#)[Translate ▼](#)

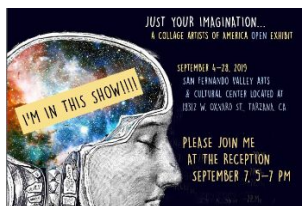
Association 2019 Annual Auction.



Karen Schifman will have *California Girl* pictured above in the *Just Your Imagination: A Collage Artists of America Open Exhibition* juried by Kathi Flood.

San Fernando Valley Arts & Cultural Center
18312 Oxnard Street
Tarzana, CA 91356

Opening Reception: September 7, 2018 from 5:00 to 7:00 pm
Runs September 4 thru 28, 2019



[Subscribe](#)[Past Issues](#)[Translate ▼](#)

"Meditation on the Trump Administration Family Values" 18" x 14" x 11" ©2019 Mariona Barkus.

Mariona Barkus has work included in four upcoming exhibitions:

Pandora's Box at Gallery Azul in San Pedro, CA (see above image titled *Meditation on the Trump Administration Family Values*).

Opening Reception on September 5, 2019 from 6:00 to 9:00 pm

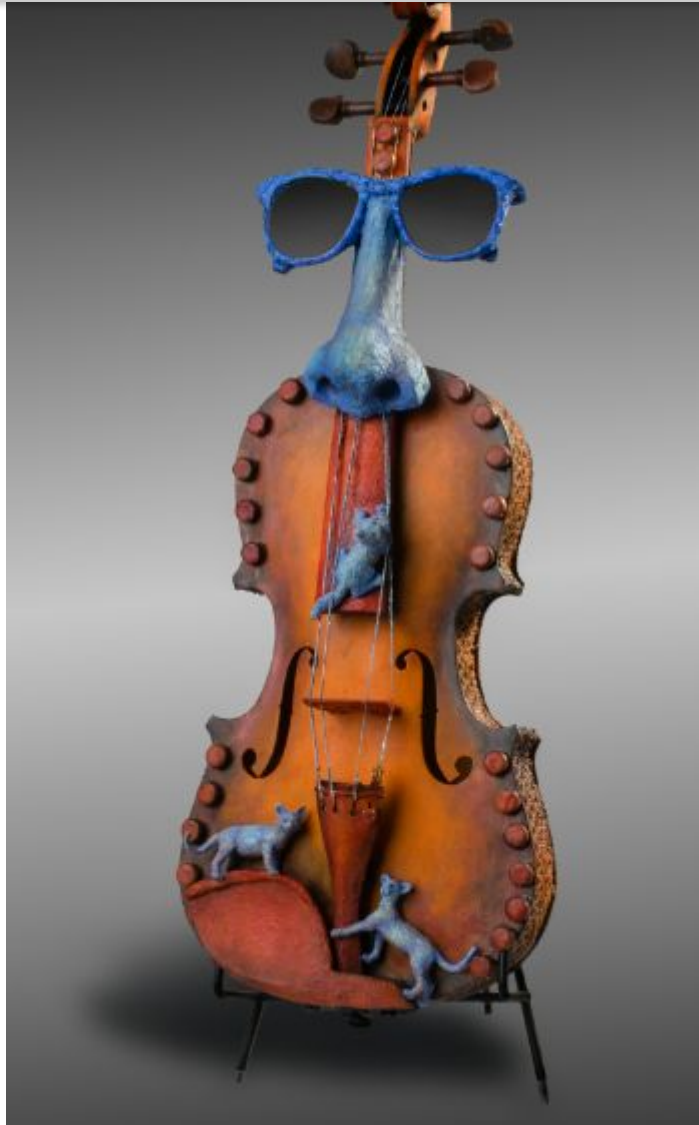
Unknown 30 painting in the *Ink & Clay 34* exhibition. Opening Reception from 2:00 to 5:00 pm on September 7, 2019 at Kellogg University Art Gallery at California State Polytechnic University in Pomona, CA.

A digital print titled *Made in America: Public Health Crisis* in the *Brand 47 Annual National Exhibition of Works on Paper* juried by Alma Ruiz.

Opening Reception from 7:00 to 9:00 pm on September 7, 2019

Illustrated History No. 12 set of eight offset postcards in folio included in *Tomes*, an artist book exhibition at Williamson Gallery, Art Center College of Design.

Runs thru December 15, 2019

[Subscribe](#)[Past Issues](#)[Translate ▼](#)

In August, **Cathy Engel-Marder's** assemblage titled *Daddy Plays the Blues* won second place in *The Art of Creative Aging* exhibition at the [San Fernando Valley Center for the Arts](#)

SCWCA MEMBER GALLERY —
Cathy Engel-Marder



The featured artist in the Member Gallery this month is **Cathy Engel-Marder** (see image above titled *It's a Zen Thing*). She creates assemblage objects and mixed media images. This form of expression feels like a natural fit to her because in the studio, as in life, her goal is to bring together the random bits and pieces of her world and transform them into something meaningful. The work is about pulling dreams into reality and remaining playful in a stressful contemporary environment. She begins each piece with a general concept—a line from a song, an image from a dream—and lets the shapes and textures on her workbench guide her from there. Building structure from the inherently random is a universal challenge, which she believes can only be met through curiosity, humor and the willingness to take risks.

<https://scwca.org/cathy-engel-marder/>

The Member Gallery is a free benefit for SCWCA members. If you wish to create or update a page, please email Ann Isolde at artistregistryscwca@gmail.com

You must be a current SCWCA member for your Member Gallery page to remain on the scwca.org website.

Women Around Town

You can also read my complete column on my blog site: [Women Around Town](#)



IN THE GALLERIES



[Jeffrey Deitch gallery](#) presents *Judy Chicago: Los Angeles*. The exhibition will feature early works by this notable feminist artist, more specifically works created between 1965-1972. Drawings, paintings, sculptures, installations and documentation of her environmental and fireworks projects will be on view. The exhibition provides an opportunity to see artworks that have not been exhibited for decades. It additionally offers a glimpse into the beginnings of what has and continues to be a remarkable career by a very influential woman artist.

Opening Reception: September 7, 2019 from 6:00 to 8:00 pm
Book and Product Signing: September 7 from 7:00 to 8:00 pm
Runs September 7 thru November 2, 2019



[Blum and Poe Gallery](#) is celebrating their 25th anniversary with a re-install of **Anya Gallaccio's *Stroke*** – a visceral installation of thick, dark chocolate smeared on the gallery walls. “Gallaccio's practice uses organic materials to

becomes a part of the installation to be embraced. The unpredictability of these ephemeral materials yields a freeing inability to control the final product, from which unexpected results emerge. These materials pulled from a feminine domestic space challenge a masculine past and reclaim a place in history.”

Opening Reception: Saturday, September 14, 2019 from 6:00 to 8:00 pm
Runs September 14 thru October 26, 2019



The Game of Patience is the current exhibition of new figurative paintings by **Laura Krifka** at [Luis de Jesus gallery](#). I look forward to seeing these paintings which are described by the gallery: “The paintings depict female and male subjects in intimate moments within carefully constructed interiors. Krifka deftly paints her bare-skinned protagonists reading, drawing, daydreaming, watching and waiting. The peep of a phallus and the highlight of a thigh gap allude to the pleasure of stillness, supplemented by the visual tension meticulously sculpted throughout the domestic spaces...”

Runs September 7 thru October 26, 2019

A weekend jaunt to Ojai is always inspiring especially with the exhibits at [Porch Gallery](#). *Porch Beatrice Wood: Bed Stories and More* is their current exhibition. These are works on paper and not ceramics which Wood is mostly known for. Published by Lee Waisler in 1987, when Wood was in her nineties, the hand-painted

[Subscribe](#)[Past Issues](#)[Translate ▼](#)

creativity.

Runs September 5 thru December 1,
2019

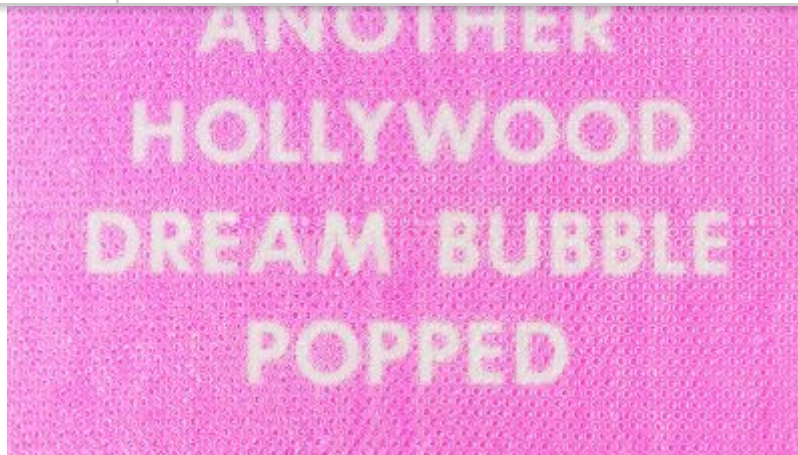


**VITA
ART
CENTER**

NIGHT FLIGHTS: NEW WORK BY JOANNE JULIAN
Preview Champagne Reception: Saturday, August 31 from 4-7pm

*Night Flights: New Work by **Joanne Julian*** is now being exhibited at [Vita Art Center](#) in Ventura. These new works continue to display Julian's adeptness with drawing techniques through her use of pencil and ink. She brings nature to life in a very careful and spectacular manner. Author Betty Ann Brown sees Julian as "a modern American master of haboku ('flung ink' style.) Usually associated with Zen Buddhism, haboku was practiced by monks who, after years of arduous training, sat in meditative repose until they sensed a oneness with the universal life force. The monks then moved from meditation to art allowing the force to flow through them, through the brush and onto the paper in rapid dexterous strokes."

Runs thru September 26, 2019



Boring Art: Tammi Campbell is the current exhibition at [Anat Egbi gallery](#) in Culver City. The title is a tongue-in-cheek reference to the John Baldessari piece *I Will Not Make Boring Art* (1971). For this exhibition, Campbell reproduced iconic works by Ellsworth Kelly, Frank Stella, Josef Albers, John Baldessari and Ed Ruscha. She has carefully selected these works from the male-dominated canon of abstraction and beyond. This was followed by scrutinizing research to replicate them in a precise manner.

Runs September 7 thru October 26, 2019



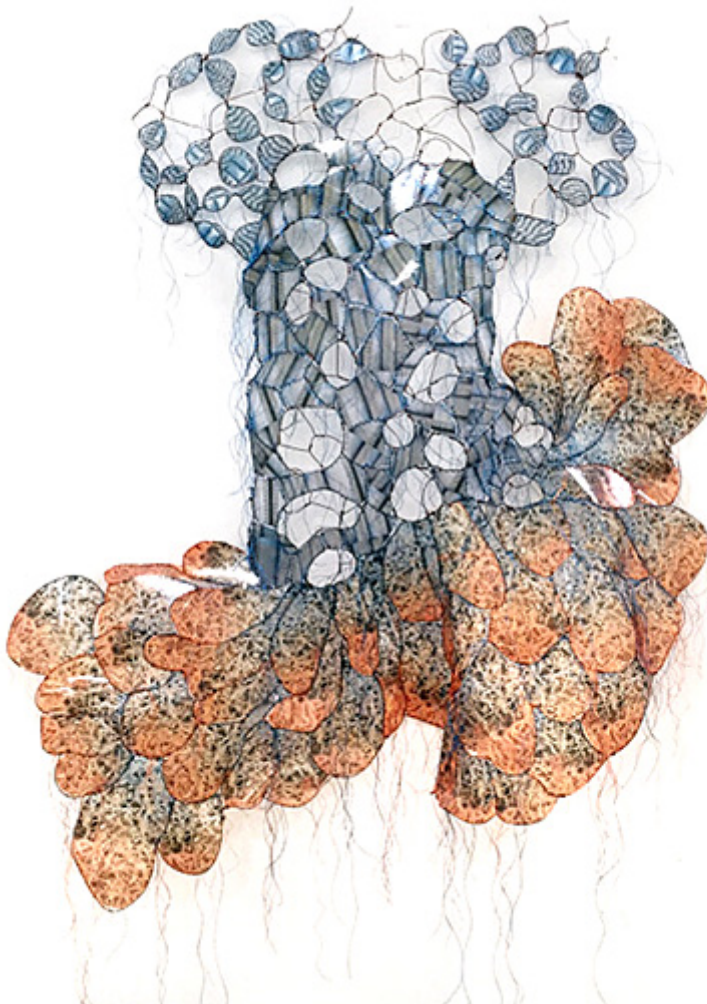
Later this month at [TAG Gallery](#) is a timely exhibition titled, *Sanctuary*, the first installation of a multi-year project by **Pam Douglas**. Life-size drawings of refugees walking behind a chain link fence and children trapped behind ropes fill the gallery. The 60-foot installation makes the viewer a witness to the refugee journey. Douglas explains her very personal response: "We are in a startling time hearing the cries of children torn from their parents at the American border. Beyond this country, refugees are seeking sanctuary around the world. This work is a visceral response to their humanity."

[Subscribe](#)[Past Issues](#)[Translate ▼](#)

Yvette Gillis: Omnipresence or Chance curated by [Molly Enholm](#) continues at the [Cal State Northridge West Gallery](#). Her large ethereal paintings and works on paper take their cue from nature.

Runs thru September 12, 2019

IN THE MUSEUMS



Dress Rehearsal is a group exhibition at the [Oceanside Museum of Art](#) curated

[Subscribe](#)[Past Issues](#)[Translate ▼](#)

Meier, Janet Taylor Pickett, Leigh Salgado, Gwen Samuels (see *High Strung* image above), Mary Tuma, et al. The myriad ways a garment can be interpreted and represented are showcased in this exhibition. The media ranges from sculpture, installation, paintings, photographs and mixed-media. For example, Gwen Samuels' garments are comprised of tea bags and photo transparencies stitched together and the results are exquisite. Another example, and an artist whose work inspired this exhibition, is Melissa Meier. Her *Skins* series are literal "constructions," as she calls them, made from elements found in nature like pine cones, stones, sea shells, sticks, etc. and are very theatrical in nature.

Runs thru January 19, 2020



Mary Corse: A Survey in Light continues at [LACMA](#). It is the first solo museum survey in a long overdue examination of this singular artist's career. Click on the link for a video of the artist in her [studio](#).

Runs thru November 11, 2019



Later this month and also at LACMA is *Betye Saar: Call and Response*. The exhibition will cover the span of Saar's career with a focus on her sketchbooks and their transition to finished works in physical form.

Runs September 22 thru April 5, 2020

[Subscribe](#)[Past Issues](#)[Translate ▼](#)

OBSIDIAN LADDER, a site-specific installation by Bolivian-American artist **Donna Huanca** continues at [Marciano Foundation](#).

Runs thru December 1, 2019



Also continuing at Marciano is **Anna Uddenberg: Privé**. Uddenberg explores social conventions and norms that are the product of consumer culture.

Runs thru December 22, 2019



Copyright © 2019 SCWCA, All rights reserved.

This email newsletter is sent to all active members in the Southern California chapter of the Women's Caucus for Art

Our mailing address is:

SCWCA
16795 Monte Hermoso Dr
Pacific Palisades, CA 90272-1909
[Add us to your address book](#)

Want to change how you receive these emails?
You can [update your preferences](#) or [unsubscribe from this list](#).

[Subscribe](#)[Past Issues](#)[Translate ▼](#)

This email was sent to <<Email Address>>

[why did I get this?](#) [unsubscribe from this list](#) [update subscription preferences](#)

SCWCA · 26714 Via Marquette · Lomita, CA 90717 · USA

